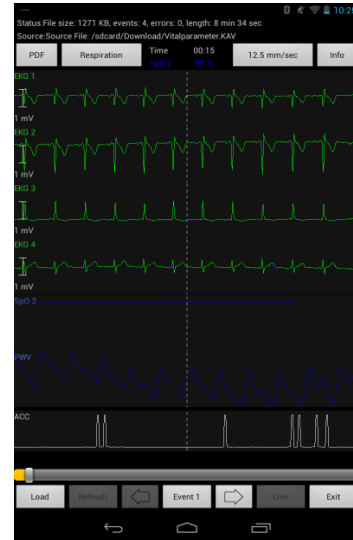


The following regulatory compliant procedure pack for new concepts for mobile patient monitoring to be offered to other parties as “predicate device” resp. test equipment.



### Cor/log® Watch

Bluetooth™ streaming telemetry and data logging system for multiple physiological parameters. A selection of the following parameters will be recorded and stored onto a microSD™ card:

- 6 lead ECG
- 2-channel respiration movement (abdomen and thorax)
- Photoplethysmogram and SpO<sub>2</sub>
- 3-axis acceleration
- Event button
- Battery status

The parameters will also be forwarded to a receiver using the SPP profile in a proprietary format (KAV) suitable for loggers, viewers and Gateways. The customer can get a reference implementation or a complete Viewer.

### Cor/log® View

Viewer for Android™ tablet

Accepts streaming Bluetooth and logged data from the Cor/log® Watch microSD™ card. Received data streams will be immediately saved to the Flash memory of the Tablet PC. This allows near-real-time viewing of the data stream and review/replay of older data on file.

The files on the tablet can be further processed by the customers software, e.g. for analysis or transmission.

The Tablet PC with 16G of flash storage supports communications over Bluetooth, NFC and Wireless LAN 802.11b/g/n.

To use the comparison of CGS regulatory results, other parties are invited to ask for assistance by CGS regulatory.

Contact: Dr. Raymond Glocker, (+49) 6021 45 44 72

Corlog® is a registered trademark of CGS Sensors GmbH.

Android™ is a trademark of Google Inc.

Bluetooth™ is a trademark of the Bluetooth SIG.

© Copyright 2013 CGS Sensors GmbH, Erthalstraße 12, 63739 Aschaffenburg, Germany. All rights reserved.